

THE MESSENGER

Serving the Churches of Holy Ghost and St. Bede

A PUBLICATION OF PORTSMOUTH DIOCESE TRUST REGISTERED CHARITY No. 246871



St. Bede
Popley Way
Basingstoke
RG24 9DX
01256 465214

Parish Priest:

Rev. Dominic Adeiza

Assistant Priest:

Rev. Leo Odomeja

Tel: 01256 320246

Permanent Deacon:

Rev. Tony Darroch

Parish Administrator:

Mrs Liz Murphy

Open Mon & Wed 9 am to 12 noon.

For enquiries please phone or email

Tel. No. 01256 465214 - Ext 1

Email:

stbedes@portsmouthdiocese.org.uk

Website:

www.stbedesbasingstoke.org.uk

Facebook:

facebook.com/stbedesbasingstoke

Facilities Manager:

Dr Stephen Flitcroft (Parish Office)

Mon to Fri 8 am to 12 noon

Tel. 01256 465214 Ext 3

Book-keeper:

Mrs Faye Lyons

Safeguarding:

Diocesan Office 023 92816396

Jan Hughes 07719012955

Holy Ghost Church Address

Sherborne Road, RG21 5TD

PASTORAL AREA CLERGY

St. Joseph, Basingstoke 01256 323595

Rev. Chris Whelan

Deacon Patrick O'Connell

Sacred Heart, Hook 01256 577007

Rev. Paul Leonard

St Michael, Tadley 0118 981 4572

Rev. Patrick Tansey

St. John the Baptist, Andover

Rev. Austin Gurr 01264 352829

Sunday 25th October 2020

THIRTIETH SUNDAY IN ORDINARY TIME

Year A, Psalter Week II

Sun 25th Oct	9.00 am	Mass: People of the Parish
	11.00 am	Mass: Antonio Martino RIP
	6.00 pm	Mass: Int. Jonathan Randall
Mon 26th		Ss Chad & Cedd
	12 noon	Mass: Private Intention
		<i>Exposition of the Blessed Sacrament from 11 am</i>
Tues 27th	9.30 am	Mass: Aldona Biernat RIP
Wed 28th		Ss Simon & Jude
	9.30 am	Mass: Maureen Hanafee RIP
	6.00 pm	Rosary: Join us in prayer via the webcam
Thur 29th	9.30 am	Mass: Dec. Mbrs Viegas-Furtado Family
Fri 30th	9.30 am	Mass: Int. Lloyd Family
		<i>Exposition of the Blessed Sacrament after Mass until 11am</i>
	6.00 pm	Rosary: Join us in prayer via the webcam
Sat 31st		Our Lady on Saturday
	9.30 am	Mass: Bertie & Mamie Quinn RIP
		<i>Confessions after 9.30 am Mass until 10.45 am</i>

SOLEMNITY OF ALL SAINTS

Year A, Psalter Week III

Sun 1st Nov	9.00 am	Mass: People of the Parish
	11.00 am	Mass: Dec. Mbrs of Holy Ghost Parish
	6.00 pm	Mass: Mike Targett RIP

THOUGHT OF THE WEEK

In today's Gospel Jesus says the greatest commandment is a twofold commandment of love: love of God and love of neighbour. He reminds his listeners that they themselves were once strangers in a foreign land and they must show justice and compassion to vulnerable people: those who are poor, strangers, disadvantaged. Generous love of neighbour is an indispensable means of loving God. Jesus expands the meaning of neighbour: the commandment to love includes those in our family and our community, along with elderly people, orphans, outsiders, impoverished people around the world, and even our enemies. In other words: everyone. The authenticity of our faith, our love of God and our relationship with Christ is measured by the way we treat others.

The readings challenge us to seek repentance and forgiveness for our negative attitudes towards others. The second reading suggests that we should abandon our idols—perhaps love of money, consumerism, celebrities—and make a conscious choice to love our neighbours. So many saints have expressed their love for God by seeking out the most wretched, the poorest, weakest members of society, loving them and raising them up, to reveal their intrinsic dignity as persons worthy of love.

Taken from The Living Word, Redemptorist Publications

ATTENDING PUBLIC MASS AT ST. BEDE'S CHURCH

When attending church for Mass or for prayer, we need to keep each other safe and observe the following guidelines:

- * Please WEAR YOUR OWN FACEMASK or face covering at all times except when receiving Holy Communion
- * Apply hand sanitizer when entering the church
- * Dispensation from the Sunday obligation remains and we actively encourage you to attend Mass any day of the week where possible
- * The number of parishioners able to attend each Mass will be limited to a maximum of 85
- * Toilets remain closed and the Cloister must be kept clear for access
- * Volunteers are needed to assist before and after each Mass, weekday and weekends (guidelines stipulate that volunteers must be below the age of 70 for this)
- * Please do not enter the Sacristy area via the side door in the Church as this is an emergency exit only
- ** Details will now be taken for everyone attending weekday Masses for Track and Trace purposes**

BOOKING TO ATTEND SUNDAY MASS

To book tickets for Mass on Sunday 1st November at either 9 am, 11 am or 6 pm please use the following link (links are also posted on our Facebook page):

<https://st-bedes-mass-1st-november-2020.eventbrite.co.uk>

Please remember to cancel your tickets if you find that you are no longer able to attend, thank you.

APP TO AID TRACK AND TRACE PROCESS

The government has launched a new system to aid the Track and Trace process and places of worship are on the list of venues. Our parish has created a QR Code poster that is displayed in the entrance and other areas of the church. If you have the NHS App on your phone you can scan the QR Code on the way into the church in order to register your details with the Track and Trace programme. For anyone who is unable to use the NHS App, details will be logged as before and retained in line with government guidance.

EXPOSITION OF THE BLESSED SACRAMENT

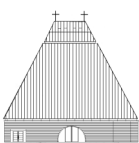
Exposition of the Blessed Sacrament takes place before all weekday and Saturday Masses from 9.00 am.

LUCKY ME DRAW

Due to the ongoing COVID - 19 situation the next season of "Lucky Me" has regrettably been postponed. We hope to launch the next season in March 2021.

ST BEDE'S CHURCH OPENING TIMES

The church is open on Monday from 11.00 am until 1 pm, Tuesday to Saturday from 9.00 am until 11.00 am and on Sunday's from 8.30 am until 12 noon and 5.30 pm until 7.00 pm. Please check the latest newsletter for daily Mass, Confession, Rosary and Exposition of the Blessed Sacrament times.



PRAYING THE ROSARY

Half an hour before each Sunday Mass there will be the opportunity to pray the Rosary. In addition, on Wednesday and Friday evenings at 6.00 pm the Rosary will be prayed in St. Bede's Church and we invite you to join in via the webcam at <https://www.stbedesbasingstoke.org.uk/live/>



THE MONTH OF NOVEMBER

For All Souls Day and throughout the month of November we will be praying for all those it pleased the Lord to call to Himself. We intend to have the names of loved ones in the Baptismal Font, with the pascal candle lit for them. Please email the names of your loved ones to stbedes@portsmouthdiocese.org.uk. If you would prefer to call in via phone please leave a message with the name of your loved ones, and for those who would rather walk in and leave the names at the Baptismal Font, you are welcome to do so. But please respect the social distancing guidelines in place and please do not include any cash.



WE ARE ACCEPTIONAL

We Are Acceptional is a new group for supporting the faith formation of people with additional needs within the Diocese. The group will provide resources, a confidential space to learn and develop skills, and a supportive community, all centrally available. The group is not only for people with additional needs themselves but also for their parents and catechists. The group will launch on Sunday 25th October and will be coordinated by Jo Donaldson, Sr. Carino Hodder, O.P. and Jeremy LeLean. If you are interested in joining the group or would like to know more you can contact us via email: acceptional@portsmouthdiocese.org.

BAPTISM PREPARATION PROGRAMME

The final Baptism Preparation Programme for this year is to be held via Zoom on Sunday 8th and 15th November from 2:30-4pm. Please apply ASAP to the Baptism email address at baptism@stbedesbasingstoke.org.uk. Please note that there will be no programme or Baptisms held during Advent.

HALF TERM BREAK

We wish all our children, teachers and staff a restful half term break.

REST IN PEACE

Please pray for Cordelia Kinney RIP and Margaret Sauce RIP who have died recently. May their Souls and the Souls of all the faithful departed Rest in Peace.



GIFT AID SCHEME

Are you a UK Taxpayer? If so, the government could top up your gift by 25%, through the Gift Aid scheme. Forms are available in the entrance to the church or on our website. Just fill in the form and post it back. For every donation we receive the Government gives us 25% extra. Thank you.

